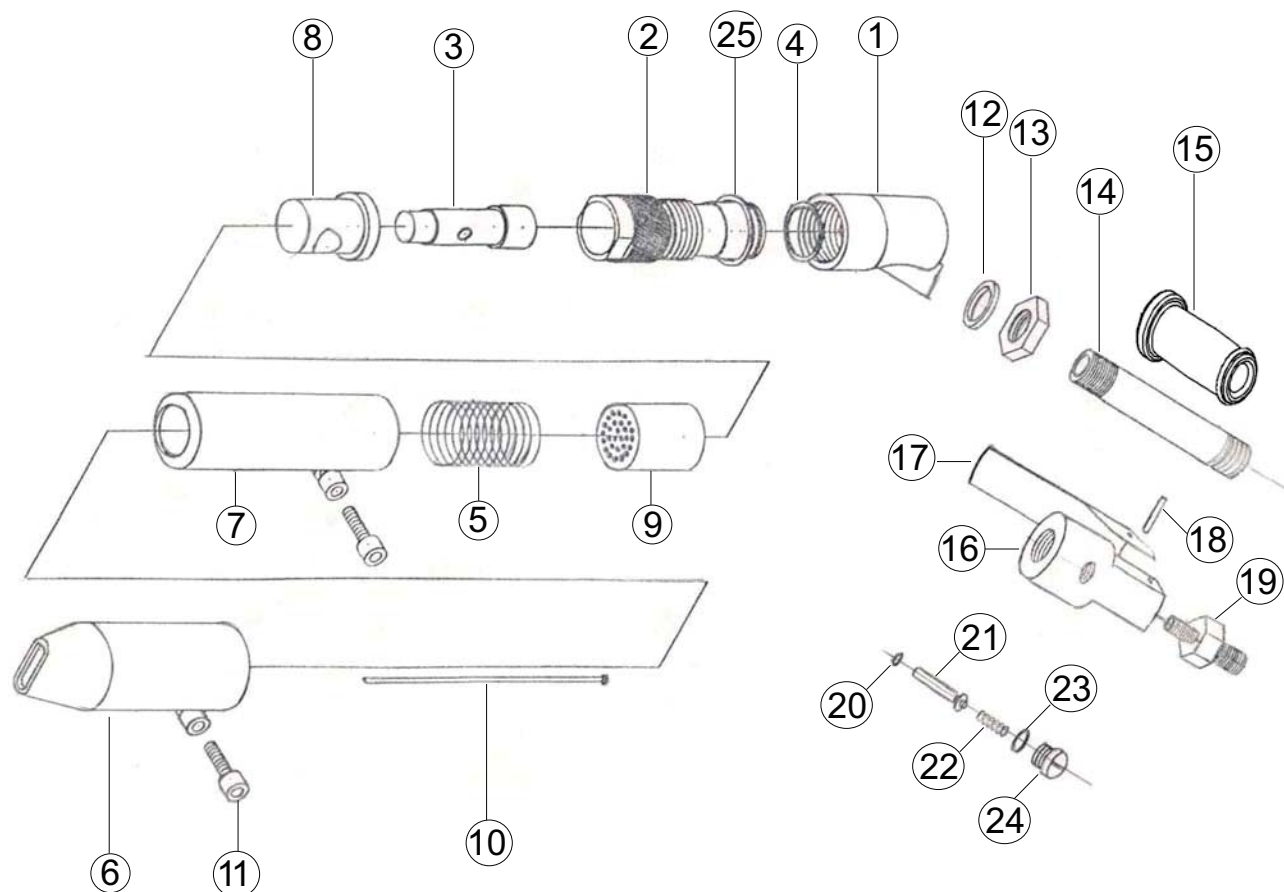


Exploded View & Assembly and Part List N28G



| Illus No. | Part No. | Description | Qty |
|-----------|---------------|------------------------|-----|
| 1 | 142 2101R | Cover Assembly | 1 |
| 2 | 100 2102 | Sleeve | 1 |
| 3 | 100 2103 | Piston | 1 |
| 4 | 100 4012 | "O" Ring for Sleeve | 1 |
| 5 | 100 5108 | Spring Return | 1 |
| 6 | 100 2409 | Front Tube | 1 |
| 7 | 100 2410 | Intermediate Tube | 1 |
| 8 | 100 2104 | Anvil | 1 |
| 9 | 100 2105 | Needle Holder 3mm | 1 |
| 10 | 022 9004 HTBL | 3mm x 180mm Needle | 28 |
| 11 | 200 9068 | Soc. Head Bolt M8 x 30 | 2 |
| 12 | 810 9001 | Sealing Washer | 1 |

| Illus No. | Part No. | Description | Qty |
|-----------|----------|---------------------|-----|
| 13 | 625 5301 | Lock Nut | 1 |
| 14 | 122 3201 | Main Handle | 1 |
| 15 | 717 5301 | Rubber Grip | 1 |
| 16 | 616 5321 | Valve Body | 1 |
| 17 | 716 3000 | Throttle Lever | 1 |
| 18 | 813 0108 | Roll Pin | 1 |
| 19 | 100 4018 | Plastic Plug | 1 |
| 20 | 809 0089 | "O" Ring Valve Seat | 1 |
| 21 | 618 3022 | Valve Stem | 1 |
| 22 | 712 3022 | Valve Spring | 1 |
| 23 | 809 0139 | "O" Ring Valve Cap | 1 |
| 24 | 615 3021 | Valve Cap | 1 |
| 25 | 100 413 | "O" Ring for Sleeve | 1 |